



# 2008-2009 GMT Quarterly Report for District (or Undistricted) **District 103 S**



GMT: **JACQUES 'JACK' VERBEKE**

Location: **FRANCE**

GMT CA: **4**

## CLUBS

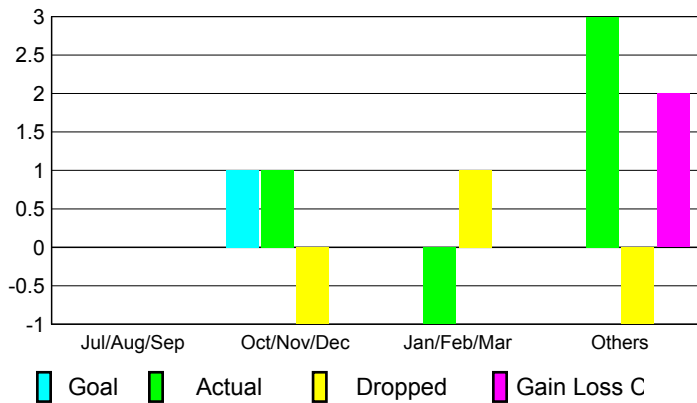
### Club Results 2008-2009

### Clubs 2007-2008

Month	New Club Goal	Actual New Clubs	Actual Dropped Clubs	Gain/Loss of Clubs	Gain/Loss of Clubs
Jul/Aug/Sep	0	0	0	0	0
Oct/Nov/Dec	1	1	-1	0	0
Jan/Feb/Mar	0	-1	1	0	1
Apr/May/June	0	3	-1	2	1
<b>Totals</b>	<b>1</b>	<b>3</b>	<b>-1</b>	<b>2</b>	<b>2</b>

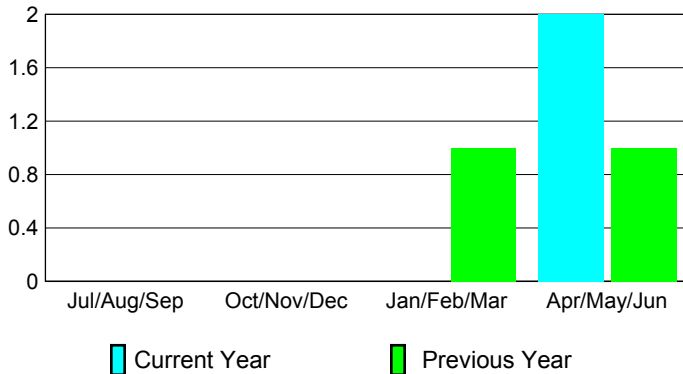
### Club Results 2008-2009

Goal, New, Dropped, Gain/Loss



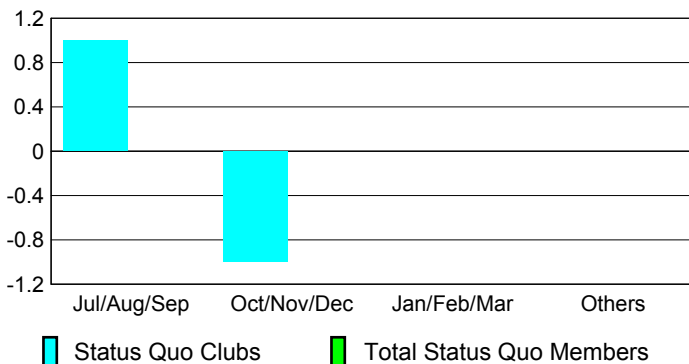
### Comparison of Club Gain/Loss

Current Year Compared to the Previous Year



### YTD Status Quo Clubs 2008-2009

Status Quo Clubs Compared to Status Quo Members



## MEMBERSHIP

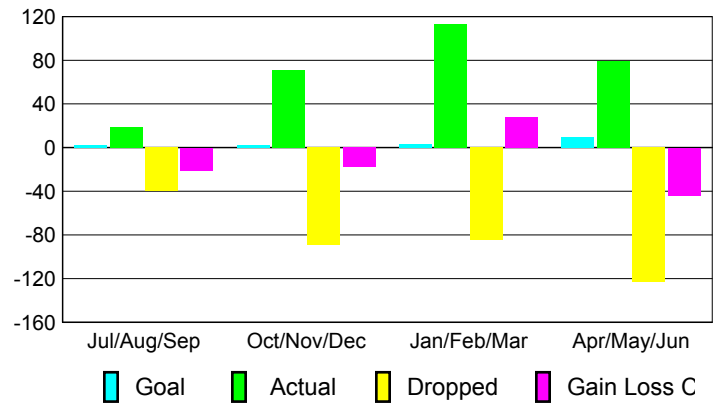
### Membership Results 2008-2009

### Membership 2007-2008

Month	Net Memb Goal	Actual New Memb	Actual Dropped Memb	Gain/Loss of Memb	Gain/Loss of Memb
Jul/Aug/Sep	2	19	-40	-21	11
Oct/Nov/Dec	2	71	-89	-18	-20
Jan/Feb/Mar	3	113	-85	28	-11
Apr/May/June	10	79	-123	-44	1
<b>Totals</b>	<b>17</b>	<b>282</b>	<b>-337</b>	<b>-55</b>	<b>-19</b>

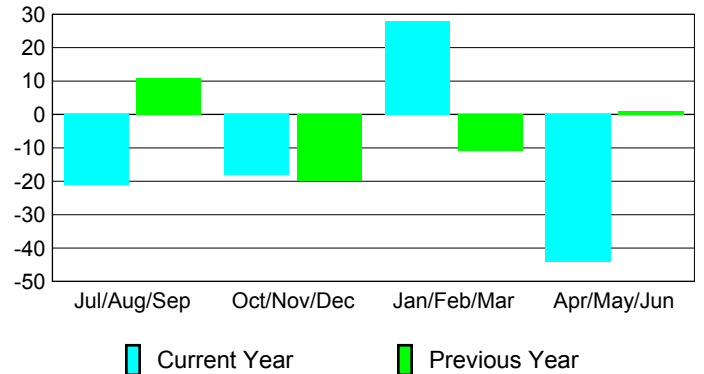
### Membership Results 2008-2009

Goal, New, Dropped, Gain/Loss

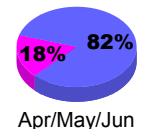
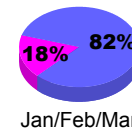
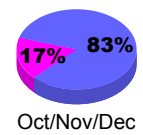
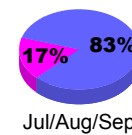


### Comparison of Membership Gain/Loss

Current Year Compared to the Previous Year



### Gender Comparison 2008-2009



Male

Female